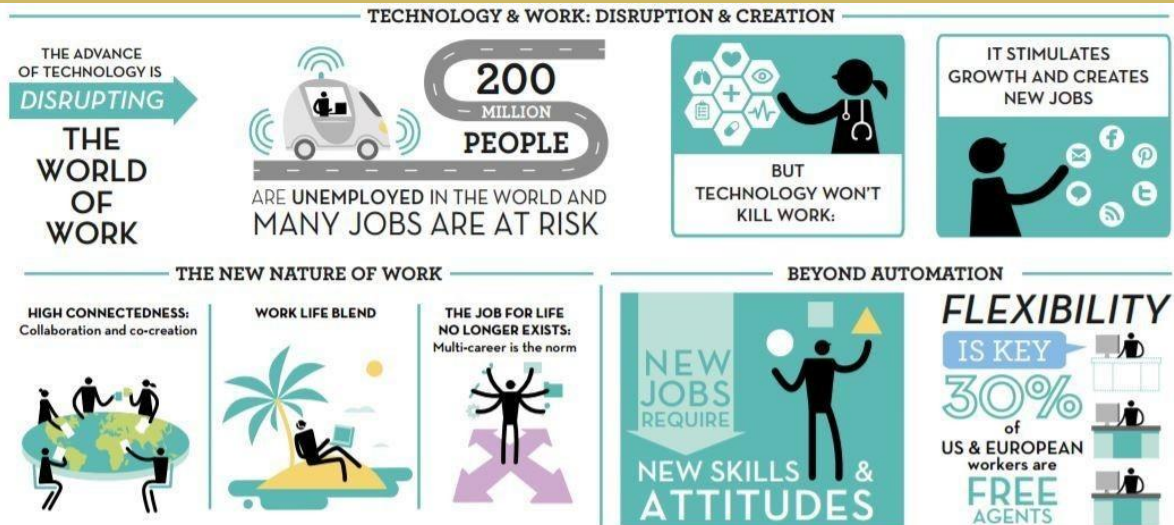




## Asia Insight CIRCLE

### EVENT OVERVIEW



- *Diana Wu David, Author of "Future Proof"*
- *Kate Grant, APAC HR, Deutsche Bank*
- *Jennifer Van Dale, Partner, Eversheds*

# The Future of Work

## Prepare Yourself

## Prepare Your Company

Friday, 24 May from 7:45 to 9:30 am

Mandarin Oriental Hotel | L2, Statue Square | 5 Connaught Road | Central

" Warp speed developments in technology – automation, artificial intelligence and the arrival of the sharing economy – are transforming how we work. Beyond technology, traditional working patterns are also being disrupted. – World Economic Forum

The future of work is one of the hottest management topics of the day. What will jobs alongside machines look like? What do we need to do - as organisations and as individuals - to prepare for these wide-ranging scenarios? How do you get ready? Change is a constant, so flexibility and creativity are of paramount importance. Be prepared for the future of work. We're honoured to have three top-notch professionals to dive in and pull apart our topic



## Asia Insight CIRCLE

### SPEAKING

- Diana Wu **David** – Author, "Future Proof: Reinventing Work in the Age of Acceleration"
- Kate **Grant** – Managing Director, Head of Human Resources APAC & CCO HR, Deutsche Bank
- Jennifer **Van Dale** – Partner, Eversheds Sutherland

### ATTENDING

- Bea **Armstrong** – Business Consultant
- Madison **Ashley** – Director of Marketing, Balance Potential
- Johan **Bygge** – Chairman, EQT Asia Pacific
- Alastair **Campbell** – Chairman, Bridger Intelligence
- Emma **Dale** – Co-Founder and Managing Director, Prospect Resourcing
- Anthony **Davies** – Chief Executive, Barclays Bank, Hong Kong
- Sanjeev **Gandhi** – Member of the Board of Executive Directors, BASF
- Stuart **Harris** – Co-Founder & Managing Director, Team Building Asia
- Richard **Kelly** – Chief Catalyst, The Fung Group
- David **Ketchum** – CEO, Current Asia
- Melissa **Mowbray-d'Arbela** – M&A Advisor
- Steffen **Naumann** – Co-Managing Director, The Zuellig Group
- John **Ng** – CFO & SVP, LKK Health Products Group Ltd

### HOSTING

- Santo **Rizzuto** – Director, Asia Insight Circle



## Asia Insight C I R C L E

### SPEAKING

---

#### DIANA WU DAVID – AUTHOR, "FUTURE PROOF: REINVENTING WORK IN THE AGE OF ACCELERATION"

I am a former Financial Times executive, author of Future Proof: Reinventing Work in an Age of Acceleration and adjunct professor at Columbia Business School's EMBA Global Asia. I work with global leaders to enhance their ability to adapt, contribute, collaborate and grow and with organizations and boards that seek a competitive edge by enhancing leadership and engaging multigenerational talent. I am privileged to have spoken to or consulted with clients including the Mandarin Oriental Hotel Group, the World Bank, Expedia, Randstad and Credit Suisse.

My company, Sarana Labs, invests in young people and companies that will prepare them for a bright future. Check out our latest initiative: The Opportunity Project.

---

#### KATE GRANT – HEAD OF HUMAN RESOURCES, ASIA PACIFIC REGION & CHIEF OPERATING OFFICER, HUMAN RESOURCES, DEUTSCHE BANK

With over 25 years of experience in Human Resources, Kate has worked across the globe with several multi-nationals including Telstra, KPMG, Cathay Pacific Airways, WPP Group plc and Deutsche Bank in a variety of HR roles. Kate's international experience includes stints in Sydney, London, and Singapore. Most recently Kate has been based in Hong Kong for the past 7 years and is currently the Regional Head of Human Resources for the Asia Pacific region and Chief Operating Officer for Human Resources.

---

#### JENNIFER VAN DALE – PARTNER, EVERSHEDES SUTHERLAND

Jennifer heads Eversheds' Hong Kong and Asia Pacific employment practice, representing employers and senior executives.

Her practice touches on all aspects of employment work, from background checks to HR compliance issues to post-termination restraints. She advises on the employment and privacy issues in bribery and fraud investigations, M&A deals, and business transfers, as well as the employment aspects of complex multi-jurisdictional projects.

Jennifer regularly conducts training sessions for corporate clients on termination, restructuring, discrimination, harassment and occupational health and safety.



## Asia Insight C I R C L E

### ATTENDING

#### BEA ARMSTRONG – BUSINESS CONSULTANT

Bea Armstrong is a non-profit executive from the United States with over twenty-five years of experience in strategic planning, business development, fundraising, marketing and communications. She has worked in senior NGO management positions and as a consultant in the environmental, education, and social service sectors in the Western USA, China and Tibet. Most recently, Bea was the Director of Development and Communications at the Deschutes River Conservancy in Bend, Oregon. Since relocating last January, Bea is currently a business consultant in Hong Kong. Her services include full program audits, organizational development facilitation, business strategy assessments and program development.

#### MADISON ASHLEY – DIRECTOR OF MARKETING, BALANCE POTENTIAL

Madison Ashley is a qualified Workplace Wellness adviser, distinguished as a Faculty Member of the Wellness Council of America and trained in Workplace Wellness Programs, Mindfulness-based Stress Reduction and Holistic Stress Management. With first-hand experience of how great leadership, purposeful culture, and genuine employee engagement strategies can transform the profile of an organization and elevate individual and organizational performance, Madison is dedicated to working with companies across Asia in creating and sustaining human-centric cultures built around well-being in the workplace.

#### JOHAN BYGGE – CHAIRMAN, ASIA PACIFIC, EQT PARTNERS ASIA LTD

Johan Bygge joined EQT in 2011 and is today Chairman of EQT Asia Pacific. Before EQT Johan worked as CFO within Investor AB.

During 1987-2006 Johan served with Electrolux where he held numerous CEO-positions, more recently CEO Electrolux Major Appliance Europe and Asia Pacific and CEO Electrolux Major Appliance International, including operations outside of Europe and North America. Prior to that he served with Ericsson as Deputy Group Treasurer and Deputy Group Controller.



## Asia Insight C I R C L E

---

### ALASTAIR CAMPBELL – CHAIRMAN, BRIDGER INTELLIGENCE

In a career spanning 40 years, Alastair has advised Governments, Financial Institutions and Multinational companies on a broad range of transactional and public affairs assignments. He has served as Head of Europe Coverage for ICBC International, Vice Chairman Greater China for Apco Worldwide, China President of the French digital technology group Thomson S.A. and as a main board Director of TCL Multimedia Technology Holdings (HKSE 1070).

In the public sector, he was a council member of China British Business Council and Executive Director of the Royal Institute of International Affairs. Mr. Campbell holds an M.A. degree from Oxford University in Oriental studies, and a diploma from Beijing University in Chinese studies. He speaks Mandarin and several European languages.

---

### EMMA DALE – CO-FOUNDER AND MANAGING DIRECTOR, PROSPECT RESOURCING

Emma Dale is Co-Founder and Managing Director (Asia) at Prospect and has specialised in PR and corporate communications recruitment for over 20 years. She set up Prospect with Colette Brown in 2002 and in 2009 Emma set up Prospect's Asia operation in Hong Kong and Singapore. She specialises at a senior level and recruits for communications consultancies as well as MNC's, working on roles within internal & external communications, social media & digital, government relations and marketing across

Emma is also a certified coach with the Institute of Executive Coaching & Leadership (IECL) and the Founder of Transform Executive Coaching. Drawing on her experience as a successful business leader, Emma coaches managers and leaders across all industries from financial services to luxury brand marketing. She is regularly engaged by Multinational Corporations to coach high-performing individuals on leadership development. In addition, she coaches individuals stuck in a rut and looking for their next career path.

---

### ANTHONY DAVIES – CHIEF EXECUTIVE, BARCLAYS BANK, HONG KONG

Anthony Davies is Chief Executive, Barclays Bank Plc, Hong Kong Branch and Country Manager, Hong Kong. In addition, he covers Senior Relationship Management in Asia Pacific and is a member of the Asia Pacific Executive Forum and Global Citizenship Council, and Chair of the Asia Pacific Citizenship Council.

Anthony is responsible for all aspects of business management for Barclays' franchise in Hong Kong and develops and manages relationships with key clients across Asia Pacific. His



## Asia Insight C I R C L E

remit covers corporations, asset managers, hedge funds, insurance companies, and sovereign wealth funds.

Anthony joined Barclays in 2010 as Head of Equities Generalist Distribution, Asia ex-Japan and has over 30 years' experience in Asian financial markets, with the majority of this time spent covering financial institutions.

Prior to joining Barclays, Anthony spent 12 years at Merrill Lynch Asia Pacific, most recently as Head of Equity Distribution for Asia Pacific. Anthony also held client facing positions in London and Jakarta with Merrill Lynch. Previously, he was at Barings Securities for seven years, where he ran the office in Jakarta before taking on a Sales Management role in Hong Kong.

Anthony graduated with a Bachelor of Administration degree in Economics and Politics from The University of York in the United Kingdom.

---

### SANJEEV GANDHI – MEMBER OF THE BOARD OF EXECUTIVE DIRECTORS, BASF

Since 2014, Sanjeev Gandhi has been a Member of the Board of Executive Directors of BASF SE, responsible for the region Asia Pacific based in Hong Kong and since May 2018 for the divisions Petrochemicals, Monomers and Intermediates.

From 2010 to May 2014, he was President of the Intermediates division, based in Ludwigshafen, Germany. Prior to this, he held a variety of management positions in Asia Pacific in the Petrochemicals and Intermediates divisions, based in Hong Kong, Singapore, Mumbai, and Tokyo. He joined BASF in 1993 as Marketing Executive, Intermediates, Inorganics & Basic Chemicals at BASF India Limited in Mumbai.

Sanjeev Gandhi was born in Mumbai, India, in 1966. He studied Chemical Engineering at the University of Pune, India, where he received his Bachelor of Chemical Engineering in 1989, followed by a Master in Business Administration (Marketing) in 1991. Sanjeev Gandhi is married and has two children.

---

### STUART HARRIS – CO-FOUNDER & MANAGING DIRECTOR, TEAM BUILDING ASIA

Team Building Asia is based in Hong Kong and provides team building solutions to companies in the Asia Pacific region. Programmes focus on enhancing the spirit of teamwork while also developing important management skills. Team Building Asia has a wide range of programmes to enhance communication, decision-making, negotiation skills, leadership and teamwork.



## Asia Insight C I R C L E

As Managing Director, I am responsible for the overall operations of the company, managing a team of ten. We are best known for our unique, licenced team building events which include business simulations, explore, creative, music & rhythms, community & environment, competitive, creative and ice breakers to name just a few.

---

### RICHARD KELLY – CHIEF CATALYST OFFER, THE FUNG GROUP

Richard Kelly is part of Fung (1937) Management and is focused on new value creation and building innovation across the group.

Most recently, Richard was the Managing Director of IDEO Asia Pacific. Based in Shanghai, his role was to lead clients to realise new opportunities and build innovation capabilities through design. Clients included Coke, Samsung, TCL, VF Corp, Singapore government. Before moving to Shanghai, Richard joined IDEO London in 2006, and was responsible for the service practice and leading clients including, Nestlé, T-Mobile, IKEA, and Alpargatas.

Before joining IDEO, Richard was at Levi's Strauss & Company for 9 years and ran his own brand consulting business in London and San Francisco.

---

### DAVID KETCHUM – CEO, CURRENT ASIA

David is founder and CEO of Current Asia, a company that uses data to create better customer experiences and make marketing more effective. Previously, he founded Upstream Asia, a regional digital and marketing communications network that was acquired by Bite Communications. He also served as SVP, Marketing and Communications for Calvin Klein Asia, and held senior positions with Burson-Marsteller and Hill & Knowlton in Asia, Europe and the US. He's the author of *BIG M, little m Marketing: New Strategies for a New Asia*.

---

### MELISSA MOWBRAY-D'ARBELA – M&A ADVISOR

Melissa Mowbray-d'Arbela is a growth equity investment advisor with in-depth China market experience. She is active in mergers and acquisitions with a focus on high-quality growth opportunities in China. She is a specialist in problem-solving, stakeholder engagement and disruptive technologies.

Earlier in her career Melissa was Managing Director of Trustbridge Partners, where she led strategic initiatives and special projects, especially coordinating and managing Trustbridge's



## Asia Insight C I R C L E

education investment and build efforts. Prior to Trustbridge, Melissa was Founder and CEO of Maven International, which provided strategic advice to companies facing disruptive technologies and change.

Melissa was the Co-Founder and CEO of Filligent Limited, a biotech company that developed and commercialised solutions to prevent infectious and lifestyle diseases. Innovations include the award-winning Anti-Microbial BioMask, & the SolarPod, named by The British Museum as one of the 100 Objects that define the History of the World.

Melissa was Co-Founder and Board Member of PathFinders, a charity that respects and protects the rights of the most vulnerable children in Hong Kong and their migrant mothers. She was a Board Member of Mother's Choice, a Hong Kong charity that assists women in crisis pregnancies and children in need of long-term care. She remains active in this area.

---

### STEFFEN NAUMANN, CO-MANAGING DIRECTOR, ZUELLIG GROUP

Steffen Naumann is Co-Managing Director of Zuellig Group., and continues to serve as Chief Financial Officer, a role he assumed in 2010.

Backed by a century of entrepreneurial experience in the Asia-Pacific region, the privately owned Zuellig Group holds and manages long-term interests in market-leading companies, with a strategic focus on selected business areas: healthcare and pharmaceuticals, specialized distribution services, agricultural equipment, industrial supplies and solutions, insurance, and property. Steffen Naumann is also a director of Golden Springs Group, an agricultural business active in animal feed, fish farming and genetics.

Prior to joining Zuellig Group, Mr Naumann served as a member of the executive board, chief operating officer and chief financial officer for Axel Springer AG, one of Europe's leading media companies. He has also held executive positions as a member of the board, executive vice president and chief financial officer of Random House, the book publishing division of Bertelsmann, as well as a member of the board and chief financial officer of Bertelsmann Buch AG, the book publishing and book club division of Bertelsmann, one of the world's leading media companies.

Earlier in his career, he served in various finance and corporate development positions for Bertelsmann, McKinsey & Company and Ford of Europe. Mr Naumann graduated in economics and business administration. He is a member of the advisory board of the Global Economic Symposium.





## Asia Insight C I R C L E

---

### JOHN NG – CFO & SVP, LKKHPG

Mr. Ng is Chief Financial Officer and Senior Vice President at LKK Health Products Group. LKKHPG is a global leader in Chinese herbal health products. Its other business arms include Chinese herbs plantation and trading, property investments, and venture capital.

John's experience covers corporate finance and business management. He began his career in the financial advisory team of PricewaterhouseCoopers in New York. In the late nineties, he joined the investment banking division of Lehman Brothers in Hong Kong. He later became a senior corporate finance and strategic planning executive of Hutchison Port Holdings, the world's largest container port operator and a key division of Hutchison Whampoa. Before joining LKKHPG, John was the Managing Partner of Landmark Capital, the Asia investment platform of Swiss industrialist Thomas Schmidheiny.

Mr. Ng received his BS business administration and Master's degree in Accounting from the University of North Carolina at Chapel Hill. He is a graduate of Harvard Business School's Executive Program. Mr. Ng is a CFA charter-holder and a CPA. He was born in Mainland China and is a native Chinese speaker.

---

### HOSTING

---

### SANTO RIZZUTO – DIRECTOR, ASIA INSIGHT CIRCLE

Santo Rizzuto is the Director of the Asia Insight Circle organization, leading operations and event management. A serial entrepreneur, Santo was the co-founder of Pearl River Antiques, importing high end antiques from China to galleries in Dallas, Chicago, and various cities throughout the state of Michigan.